

STSE SAT:

ADITYA PAUL

- ① → When was Guppes Mission launched ?
- 1947
 - 1945
 - 1942
 - 1939

- ② → When was the Second Round Table Conference held ?
- 1931
 - 1934
 - 1930
 - 1944

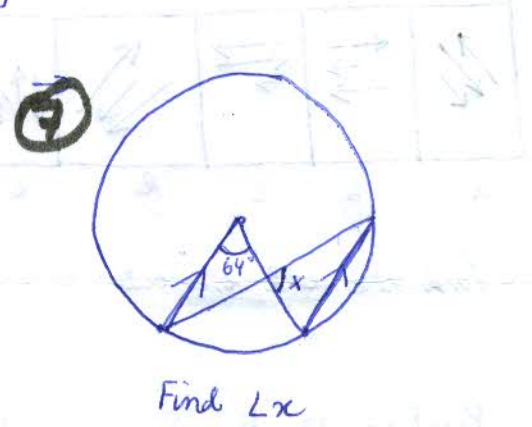
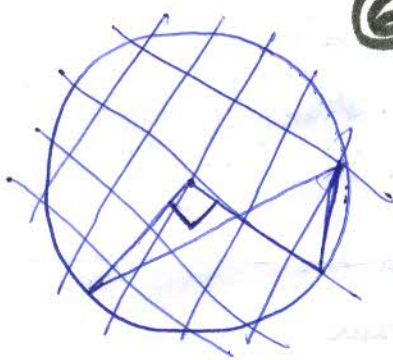
- ③ When was the battle of Buxar fought ?
- 1796
 - 1764
 - 1769
 - 1757

- ④ A boat goes downstream and covers the distance between 2 ports in 4 hrs while it covers the same distance upstream in 5 hrs. If the speed of the stream is 2 km/hr, find the speed of the boat in still water.
- 15 km/hr
 - 20 km/hr
 - 24 km/hr
 - 18 km/hr

JKd.

- ⑤ There are Rs 5, Rs, Re 1 coins in a purse in the ratio 1:3:5 by number. If the total sum is Rs 272, find the no. of each type of coin.

- ⑥ → Which of the following is efflorescent ?
- CuSO_4
 - Na_2SO_4
 - H_2SO_4



- ⑧ Which is the most used fertilizer in India :
- DDT
 - Phosphate based
 - Ammonia base

- ⑨ Linear expansion of a rod does not depend on :
- change in temp.
 - where the rod is hollow or not
 - whether the original length is diff.
 - what the material of the rod is.

- ⑩ Malaria is caused by ^{the bite of} _____
- Anopheles mosquito
 - Culex mosquito
 - Both
 - Neither

- ⑪ Arrange the following from greatest amt. of friction to lowest.
- Static, Rolling, Sliding

- ⑫ Humming is carried out in the _____ part of India ?
- North-east
 - South-east
 - South-west

- Static, Sliding, Rolling
- Static, Rolling, Sliding
- Rolling, Sliding, Static

MAT:

Complete the series

- ① → JE, LH, OL, SQ ...
- WV • XV
 - VW • XW

- ② → BDF, CFI, DHL ...
- CJM • EIM
 - EJO • EMI

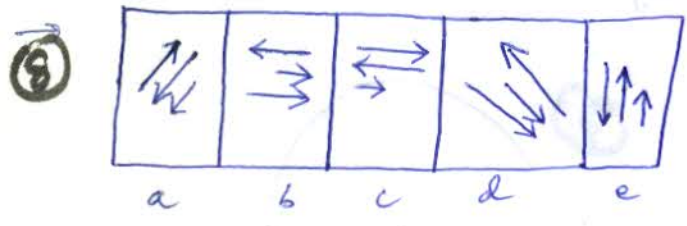
- ③ → Japan : Yen :: Bangladesh : ?
- Rupee • Taka
 - Pound • Rouble

- ④ → Cyclone : Anticyclone :: Flood : ?
- Drought • Typhoon
 - Hurricane • Storm

- ⑥ odd one out :
- pr, ac, df, zb, mp
- acf, qsv, hyl, lnp

- ⑤ →
-
- Which no. is opp. 3 -
- 1 • 6
 - 5 • 4

- ⑦ →
- rem tue dime wee = my pencil was stolen
- soz rem legh ner = your pencil is here
- rem zet tue legh = blue pencil was here
- dini rem tur usoz = your pencil was stolen



Find the odd one out.

- ⑨ →
- Painting to K, S said -
- His mother's brother is the father of my son. How is K related to S :
- Aunt • Nephew
 - Neice • Sister in law

The code for 'wee' :

- (i) • your • stolen
- my • blue

The code for 'here' :

- (ii) • ter • ner
- dini • legh

- (iii) Which of the following indicates :

Blue pencil was stolen

- Zet rem nedt dini
- Ner legh tur zet
- Zet legh tur rem

- ⑩ →
- A rat runs 20m east, then turns right and runs 10m then turns right and runs 9m and then turns left, runs 5m and again turns left, runs 12m and finally turns left and runs 6m. Which direction is the rat positioned from its original position ?

- south • south-east
- north • north-east

- ⑪ → Continue the series - 2, 10, 26, 50, 82 ...

- 110 • 112
- 120 • 122

- ⑫ → Find the wrong no. in the series - 9, 19, 37, 75, 53, 41

- 75 • 53
- 41 • 37